




# WaterHog® Masterpiece® Select Mats

## Scraper/Wiper Mats • Indoor

WaterHog Masterpiece Select mats are stain-resistant indoor mats with a unique bi-level design that traps dirt and moisture, keeping your floors clean, dry, and safe. Masterpiece Select features a tufted loop pile that produces an attractive corduroy/berber look with a parquet pattern.

- 
- **Clean & Dry** – Bi-level surface effectively scrapes dirt and moisture from shoes, trapping it beneath shoe level to prevent tracking; water dam border holds moisture keeping it off your floors (WaterHog mats can hold up to 1.5 gallons of water per square yard)
  - **Durable** – Reinforced rubber nubs prevent pile from crushing and extend the performance life of the mat
  - **Fade & Stain Resistant** – Solution-dyed PET fabric (28 ounces per square yard) is resistant to staining, dries quickly, and will not fade or rot
  - **Safe** – Beveled edges provide a safe transition from floor to mat; certified high-traction by the National Floor Safety Institute (NFSI)
  - **Eco-Friendly** – Rubber backing contains 20% post-consumer recycled rubber from car tires
  - Available in 4 colors with a classic rubber border
  - Feature 78-mil SBR rubber with universal cleated backing or smooth backing



Nutmeg



Ocean Wave



Pewter

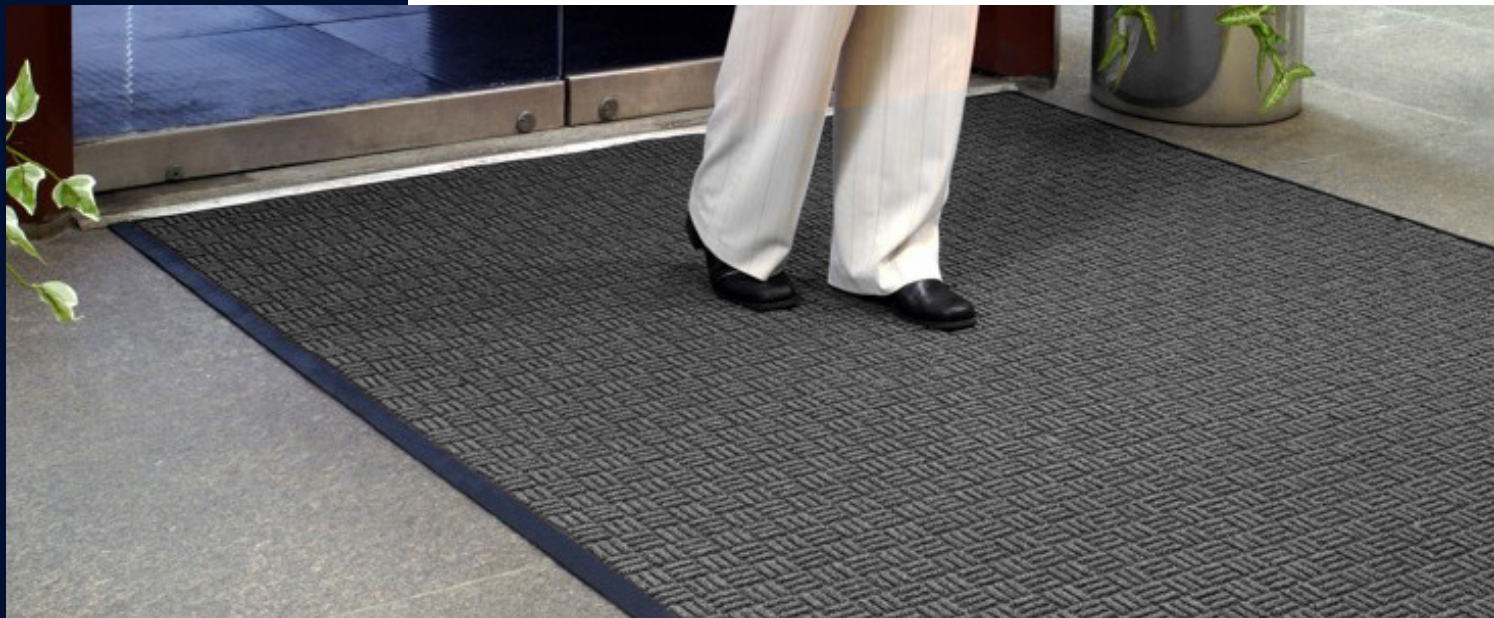


Thunderstorm

Colors may vary due to inconsistencies of various display monitors or printers (if you're viewing a printed version of this document). Color images are intended to be used as a guide only.

# WaterHog® Masterpiece® Select Mats

Scraper/Wiper Mats • Indoor



## 3/8" Product No. 265

Size (ft.)	Size (in.)	Product Weight
2' x 3'	23" x 35"	5 lbs.
3' x 4'	35" x 46"	11 lbs.
3' x 5'	35" x 59"	13 lbs.
3' x 8'	35" x 95"	20 lbs.
3' x 10'	35" x 115"	26 lbs.
3' x 12'	35" x 141"	30 lbs.
3' x 16'	35" x 188"	40 lbs.
3' x 20'	35" x 233"	50 lbs.
4' x 6'	45" x 68"	20 lbs.
4' x 8'	45" x 95"	26 lbs.
4' x 10'	45" x 115"	30 lbs.
4' x 12'	45" x 141"	40 lbs.
4' x 16'	45" x 188"	54 lbs.
4' x 20'	45" x 233"	67 lbs.
6' x 8'	70" x 95"	40 lbs.
6' x 12'	70" x 141"	60 lbs.
6' x 16'	70" x 188"	80 lbs.
6' x 20'	70" x 233"	100 lbs.

**Note:** Available in custom sizes with widths of 3' (35"), 4' (45"), and 6' (70") and whole foot lengths up to 60'. Mats up to 40' are available with smooth and cleated backing options. Mats over 40' are available in smooth backing only.

Mat sizes are approximate as rubber shrinks and expands in conjunction with temperature and time. Tolerable manufacturing size variance is 3-5%.

